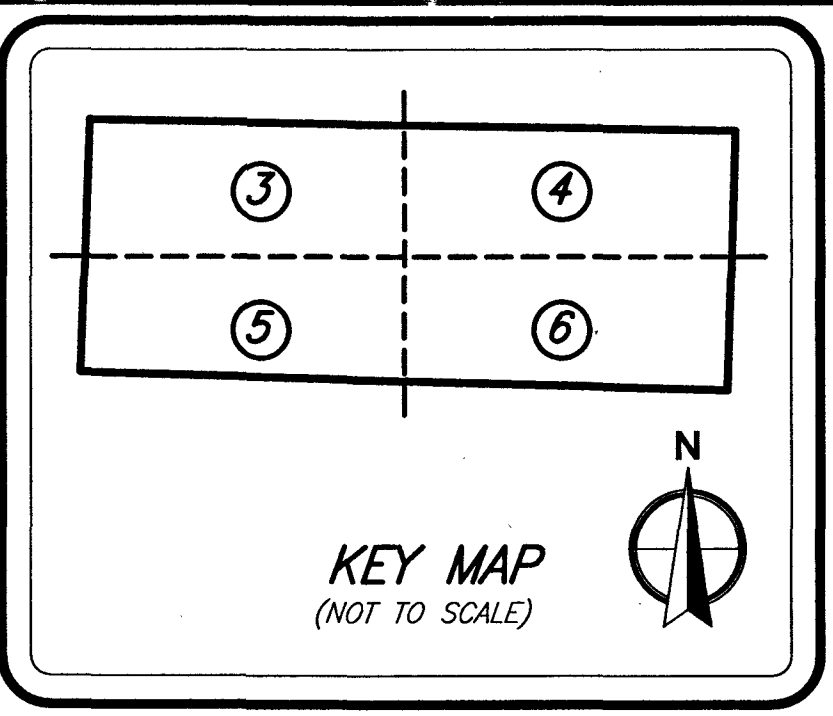
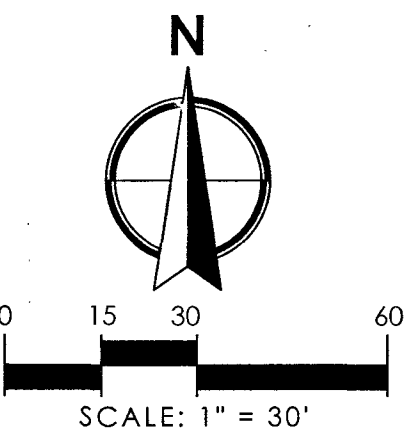


VINTAGE OAKS T1

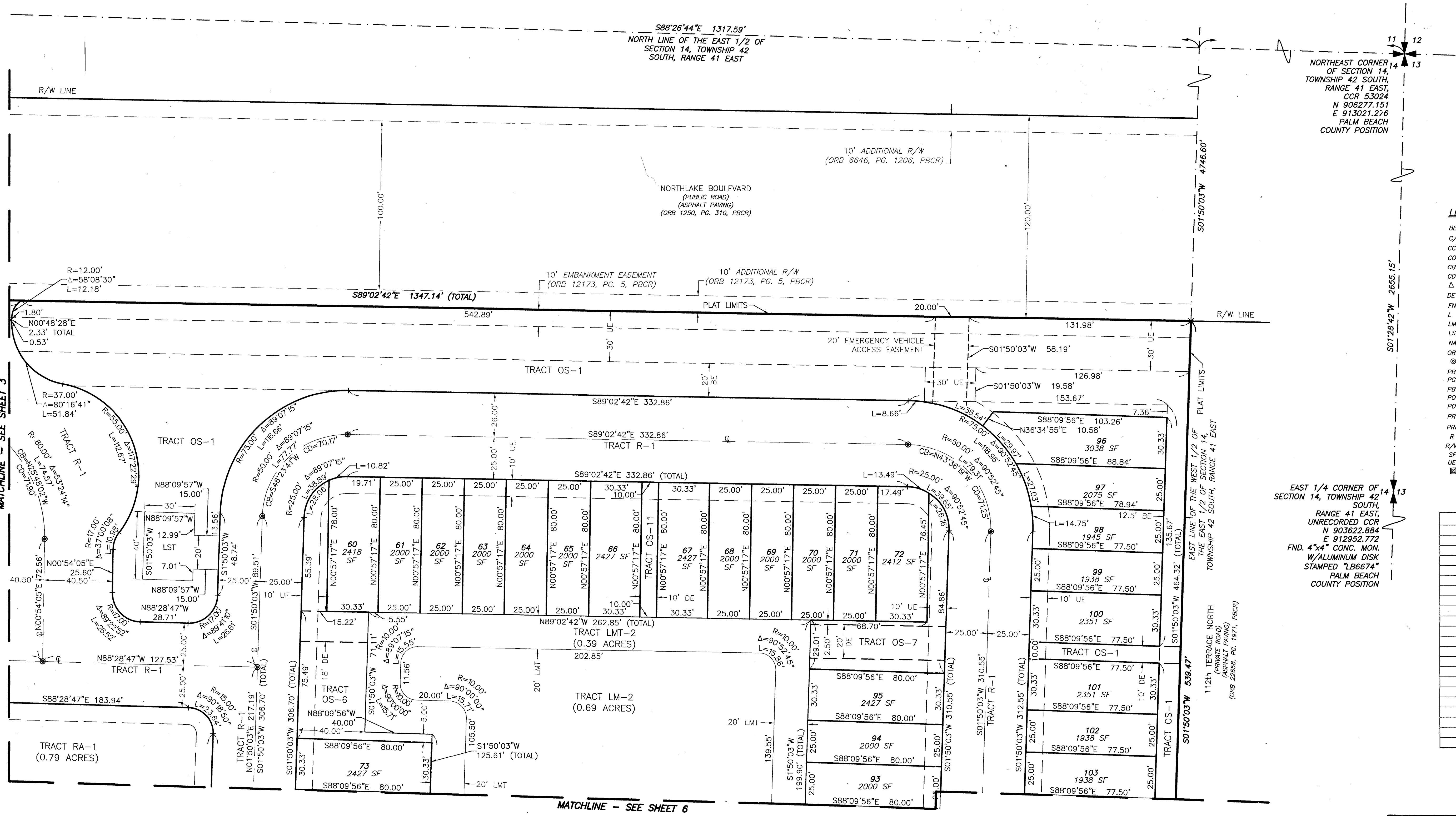
LOCATED IN SECTION 14, TOWNSHIP 42 SOUTH, RANGE 41 EAST
CITY OF PALM BEACH GARDENS
PALM BEACH COUNTY, FLORIDA

APRIL 2024



135

SHEET 4 OF 6 SHEETS



NORTHEAST CORNER OF SECTION 14, TOWNSHIP 42 SOUTH, RANGE 41 EAST, CCR 53024 N 906277.151 E 913021.276 PALM BEACH COUNTY POSITION

- LEGEND**
- BE = Buffer Easement
 - C/L = Center Line
 - CCR = Certified Corner Record
 - CONC. = Concrete
 - CB = Chord Bearing
 - CD = Chord Distance
 - Δ = Delta (Central Angle)
 - DE = Drainage Easement
 - FND. = Found
 - L = Length of Arc
 - LMT = Lake Maintenance Tract
 - LSE = Lift Station Easement
 - NAD = North American Datum
 - ORB = Official Records Book
 - ⊙ = Permanent Control Point (PCP)
 - PBCR = Palm Beach County Records
 - PG. = Page
 - PB = Plat Book
 - POB = Point of Beginning
 - POC = Point of Commencement
 - PRC = Point of Reverse Curvature
 - PRM = Permanent Reference Monument
 - R = Radius
 - R/W = Right-of-Way
 - SF = Square Feet
 - UE = Utility Easement
 - ⊗ = Set 4"x4" Concrete (PRM) w/Aluminum Disc Stamped "LB 7055 PRM"

EAST 1/4 CORNER OF SECTION 14, TOWNSHIP 42 SOUTH, RANGE 41 EAST, UNRECORDED CCR N 903622.884 E 912952.772 FND. 4"x4" CONC. MON. W/ALUMINUM DISK STAMPED "LB6674" PALM BEACH COUNTY POSITION

TRACT AREA TABULATION	
TRACT	AREA (S.F.)
LM-1	25,447
LM-2	30,181
LMT-1	14,499
LMT-2	16,932
LST	1,500
OS-1	129,772
OS-2	2,690
OS-3	7,284
OS-4	2,374
OS-5	2,018
OS-6	4,280
OS-7	3,200
OS-8	1,664
OS-9	1,817
OS-10	800
OS-11	800
OS-12	800
OS-13	800
R-1	188,973
R-2	5,054
RA-1	34,525



2035 Vista Parkway, West Palm Beach, FL 33411
Phone No. 866.909.2220 www.wginc.com
Cert No. 6091 - LB No. 7055
THIS INSTRUMENT WAS PREPARED BY KELSEY M. SMITH
P.S.M., PROFESSIONAL SURVEYOR AND MAPPER,
LICENSE NO. 7096 FOR THE FIRM: WGI, INC.